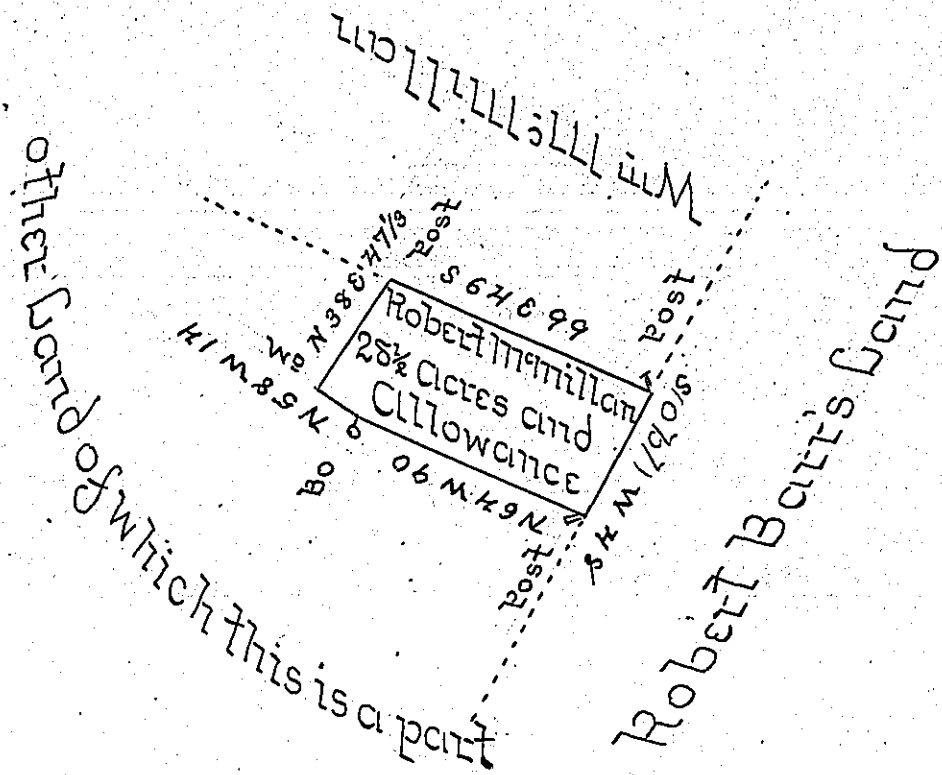


This is the 2nd Return of this piece sent to the 59 Office

1/2  
66  
OK 1



The above described piece of land containing twenty eight Acres and a half and the Allowance of six Per Cent Situate in Berry Township in the County of Westmoreland is part of a Tract surveyed to Herman Girth on his Warrant dated Nov<sup>r</sup> 10<sup>th</sup> 1785 the above described piece surveyed at the request of Robert McMillan Jan<sup>y</sup> 12<sup>th</sup> 1805 -

John Moore U.S

Samuel Cochran Esquire,  
Surv<sup>r</sup> Gen<sup>l</sup> of Penn<sup>a</sup> -

	297
	160
2/1696	137
80	

IN TESTIMONY that the above is a copy of the original remaining on file in the Department of Internal Affairs of Pennsylvania, made conformably to an Act of Assembly approved the 16th day of February, 1833, I have hereunto set my Hand and caused the Seal of said Department to be affixed at Harrisburg, this thirteenth day of January 1905.

*Francis P. ...*  
Secretary of Internal Affairs.